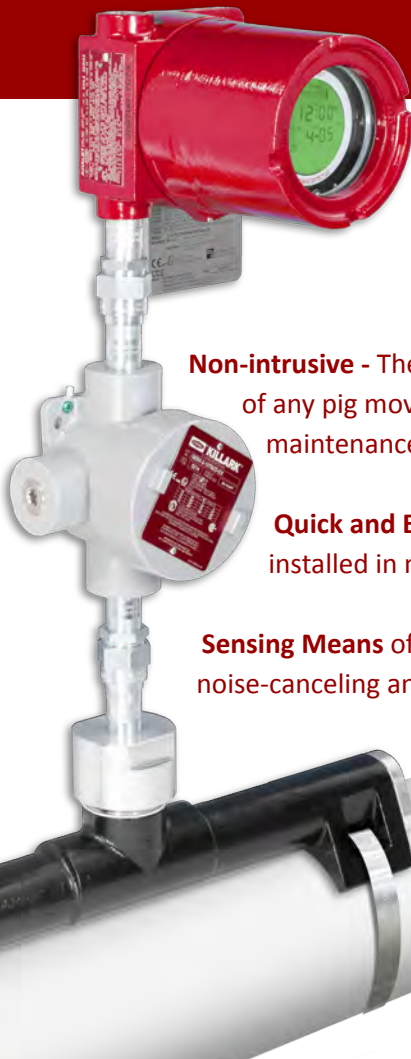


CD52 Bandit

Non-intrusive Magnetic
Pig Passage Signaler



FOR OVER FIFTEEN YEARS, THE CD52 BANDIT has meant simple, reliable, and durable pipeline pig passage detection in the world's most demanding environments.

Non-intrusive - The CD52 Bandit provides quick and easy non-intrusive pig passage detection of any pig moving between 0.01 and 20 meters per second. Non-intrusive means less maintenance and corrosion, and no possibilities of pipeline leaks.

Quick and Easy Installation - No hot-tapping required. The CD52 Bandit can be installed in minutes by any field technician.

Sensing Means of the CD52 Bandit consist of a set of patented, non-intrusive proprietary noise-canceling antennas invented by CDI specifically for pig passage detection. This antenna system gives the Bandit its ability to reject nearby magnetic noise and halt costly false-positive triggering. A small, safe, permanent magnet or active transmitter installed on a pig is all it takes to put the Bandit to work!

Field Proven - We have been manufacturing our patented CD52 family of pig signalers for a decade. With thousands of systems installed around the globe, the CD52 family has a reliable performance record in burning deserts, frozen tundras, and every environment in between. Many of our customers are large oil and gas producers who rely upon the CD52 family of equipment to set valves, control pump stations, and communicate with SCADA systems.

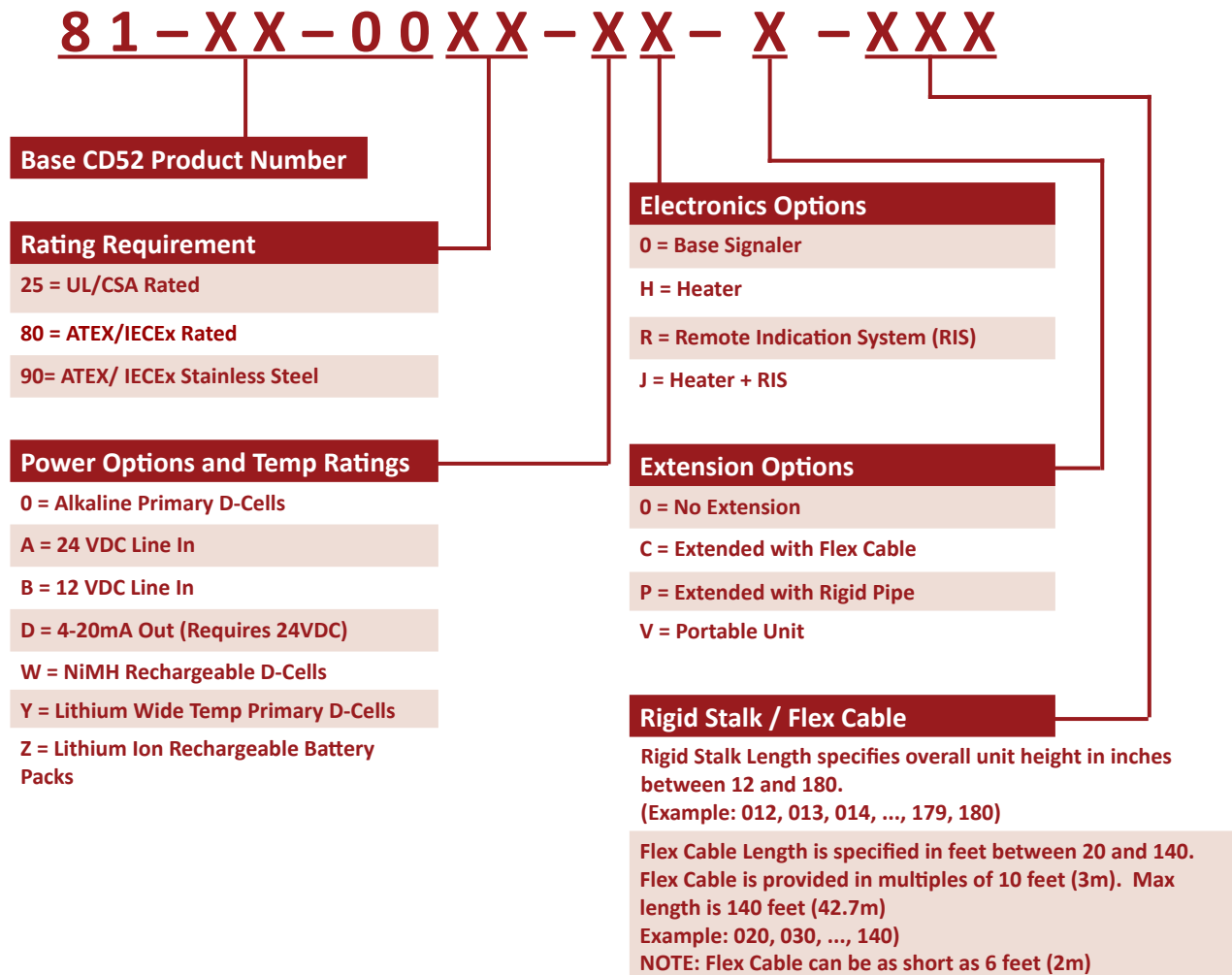
Remote Signaling of a passage is easy with a built-in flashing LCD visual display and dry-contact relays. These normally-open or normally-closed relays may be used in conjunction with existing SCADA systems to integrate the CD52-Bandit into a pipeline control and signaling network. An optional array of four high-luminosity LEDs (shown here) can be seen over distances as great as 100 meters (328 feet).



Non-Intrusive Pig Signaling Systems

CD52 Bandit Part Number Builder

Use this matrix to configure the correct Bandit Part Number



NOTE: ½" adapters can be supplied to convert cable/conduit entry from ¾" to ½" at no additional cost.

NOTE: M20 metric adapters can be supplied to convert cable/conduit entry from ¾" to 20mm. See part ADPT (81-05-0158-00).

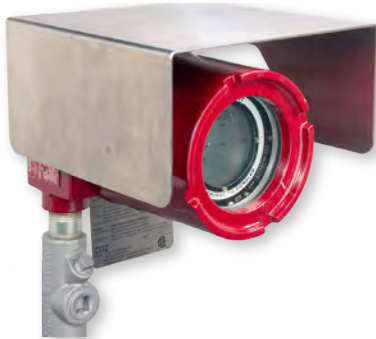
CD52 Bandit Non-intrusive Magnetic Pig Passage Signaler

Line or Battery Power - The Bandit may be line or battery powered for greatest flexibility. Two standard D-Cell alkaline batteries provide a full year of service, or, 24VDC power may be used for indefinite operation. Changing batteries is as simple as opening the cabinet, unscrewing the face of the unit, removing the old batteries, and inserting new ones.

Stainless Steel Sunshade helps protect the Bandit from intense sunlight by reducing overall temperature inside, thus prolonging the life of the electronic components. 316 stainless steel

construction guarantees long life in a harsh pipeline environment.

Conduit connections are standard ¾-in. NPT or M20 metric connections.



Easily bands to pipelines from 2 in. to 60 in. (50–1,524 mm) diameter.

OPERATIONAL SPECIFICATIONS

Operational Principle:	Non-Intrusive Passive Magnetic
Sensor:	Noise-Canceling Wire-wound Antennas
Travel Direction:	Bi-Directional
Devices Detected:	Permanent Magnet or Electromagnetic Transmitter (CD42 Transmitters or CD52 Permanent Magnets recommended)
Detection Speed:	0.01 meter/sec to 20 meter/sec
Passage Visual Indicator:	LCD blinks one hour after passage LCD holds steady for next 11 hours Auto-Resets at 12 hours
Passage Electrical Indicator:	Isolated Dry Contact Closure Relays
Pipeline Diameters:	¾ in. to 60 in. (19 mm to 1524 mm)
Pipe Wall Thickness:	1.5 in. (38.1 mm) Maximum* * Where pipe wall thickness exceeds 1 in. (25.4 mm) a custom magnet may be required. Please Consult CDI for an evaluation of deployment options.

Source:	Two 1.5 VDC Alkaline D-Cell Batteries** or 24VDC External Power **DURACELL® PROCELL (PC1300) D-Cell alkaline batteries required by ATEX and/or IECEx standards to maintain system certification
Battery Life:	One Full Year Minimum

CONSTRUCTION

Housing:	Aluminum (standard) or optional marine-coated 316L Stainless Steel
Window:	Tempered Glass

OPTIONS

Sun Shade:	Protection from intense sunlight
Heater System:	Recommended for operation below -22°F (-30°C)
LineStat:	Satellite Radio for transmitting passage time, date, and GPS location via email or SMS message
Remote Indicator System (RIS):	Provides visual passage indication up to 328 ft (100 m)

SYSTEM CERTIFICATIONS

CD52-Bandit is available with either ATEX/IECEx or CSA-UL certifications

ATEX



SIRA 13ATEX 1381
II 2G Ex d mb IIB T5 Gb IP66

IECEx



IECEx CSA 13.0039/00
Ex d mb IIB T5 Gb IP66

CSA-UL



CSA-UL Standard C22.2 No.30
rated for Class 1 Division 1

BANDIT VARIANTS

STANDARD



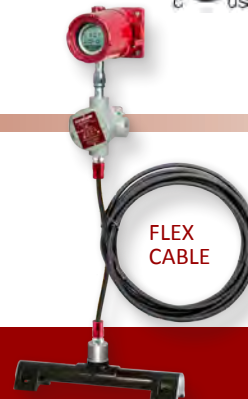
PORTABLE



PIPE
EXTENSION



FLEX
CABLE



PORTABLE
STAINLESS STEEL



Non-Intrusive Pig Signaling Systems

CD52 Bandit Magnetic Pig Passage Signaler

For over ten years, the CD52 Bandit has meant simple, reliable, and durable pipeline pig passage detection in the world's most demanding environments. The CD52 Bandit is available with ATEX/IECEX, CSA-UL, and UKCA certification.



Standard Bandit Configuration



Carbon Steel Extensions



Flex Cable



Portable



Rare Earth Trip Magnets for use with CD52-M Series (See page 13)

Non-Intrusive Pig Signaling Systems

CD52-316SS Stainless Steel Non-intrusive Pig Passage Signaler

Harsh environments are a fact of life in the world of energy production! The CD52-316SS is ATEX, IECEx, and UKCA rated and encased in corrosion-resistant 316 stainless steel. These units are ideally suited for harsh offshore and desert environments.

Standard CD52-316SS Configuration



CD52-316SS Flex Cable Configuration



Stainless Steel Extensions



CD52-316SS Portable Configuration



Non-Intrusive Pig Signaling Systems

CD52-A30/A45 Subsea Pig Signalers

Pipeline pigs are a routine part of modern pipeline operations. Keeping track of those pigs in a subsea pipeline network has become an ever-increasing part of what the pipeline integrity specialist must do. If you're running pigs below the waves, you need the CD52-A30/A45 for tracking and signaling.

CD52-A30 Pig Passage Signaler for subsea use to maximum depth of 3,000 m [9,842 ft]

CD52-A45 Pig Passage Signaler for subsea use to maximum depth of 4,500 m [14,764 ft]



Chrome Duplex Stainless Steel Housing constructed of 22/25% chrome duplex for higher strength and corrosion resistance



Fishtail Handle for ROV



Nylon Ratchet Straps